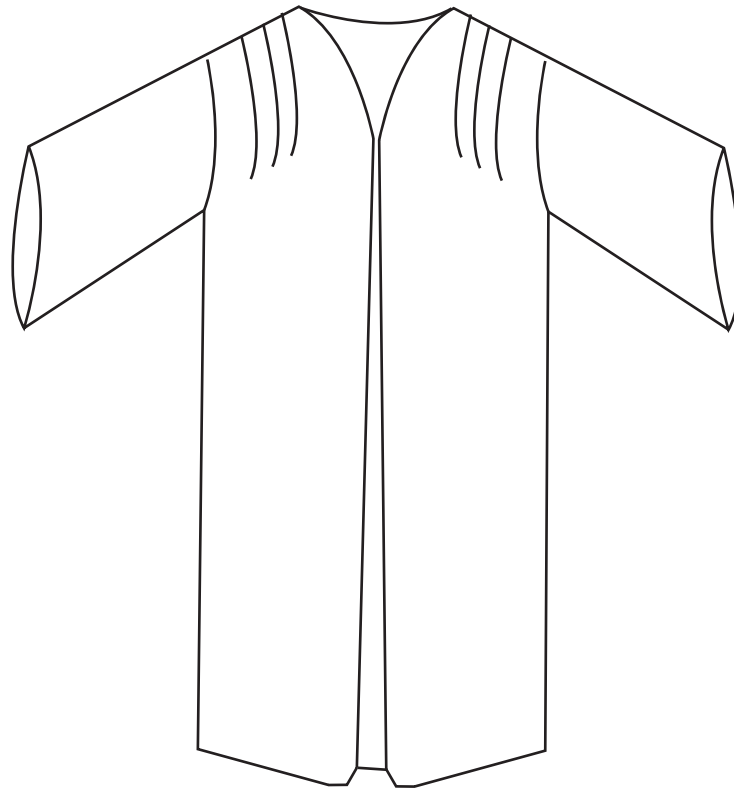


Role-play Toolkit

Make it Yourself:

Speaker and Clerk of the House of Representatives gown


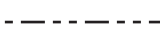






Simplified Speaker and Clerk gown

You will need:

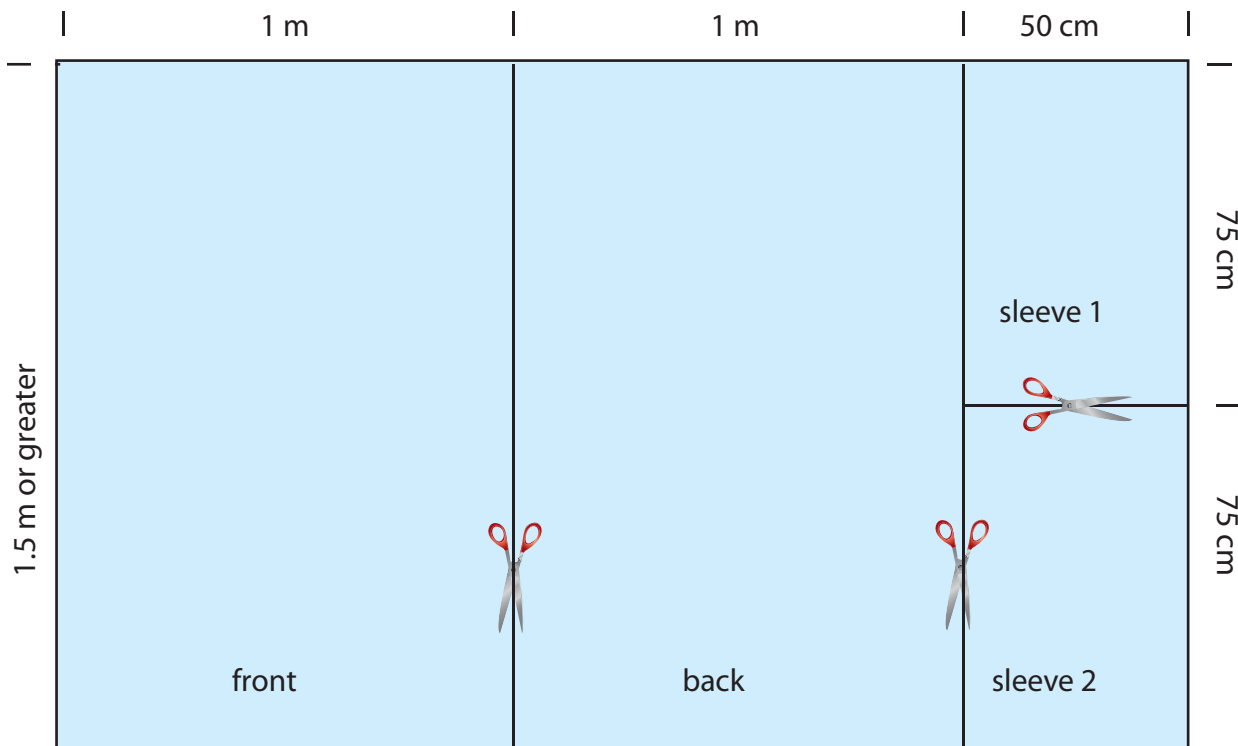
- 2.5 m of black fabric
- black cotton
- sewing needle
- sewing machine
- scissors
- tape measure
- sewing chalk and/or sewing pins
- a flat, clean surface to work on

Key:

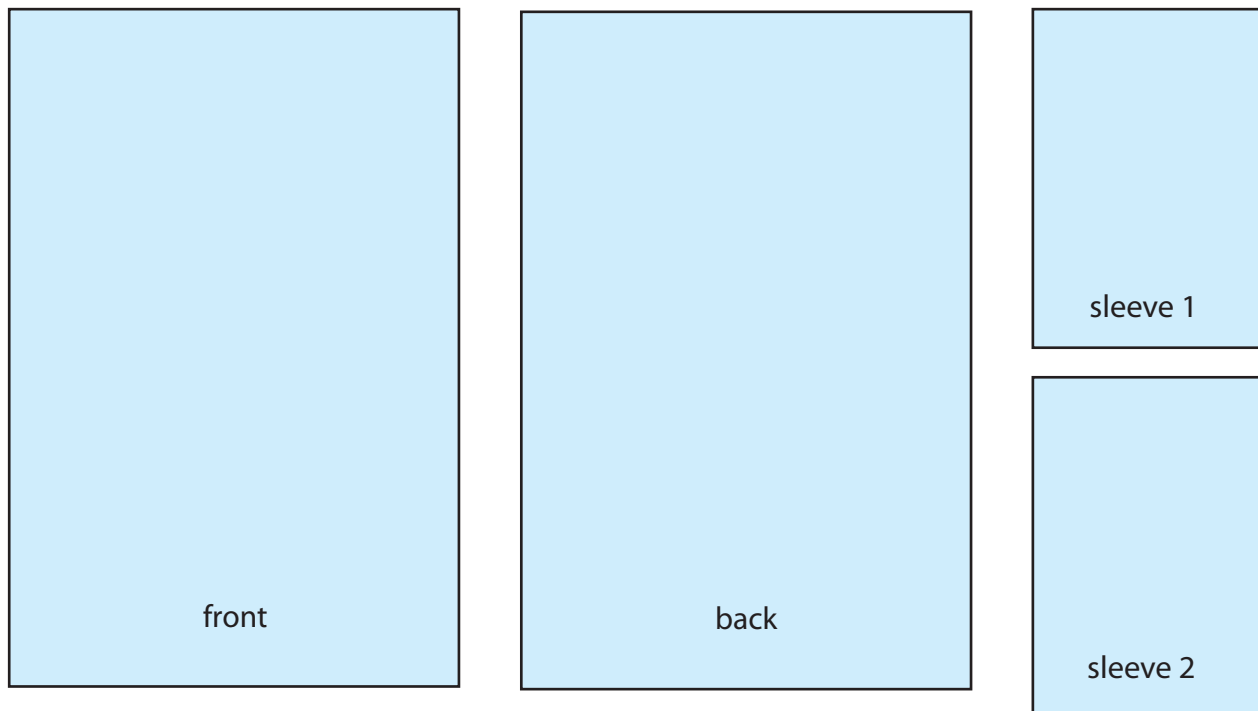
-  cut here
-  fold here
-  wrong side of fabric
-  right side of fabric
-  centre point
-  stitching

Step 1: Cutting out the fabric pieces

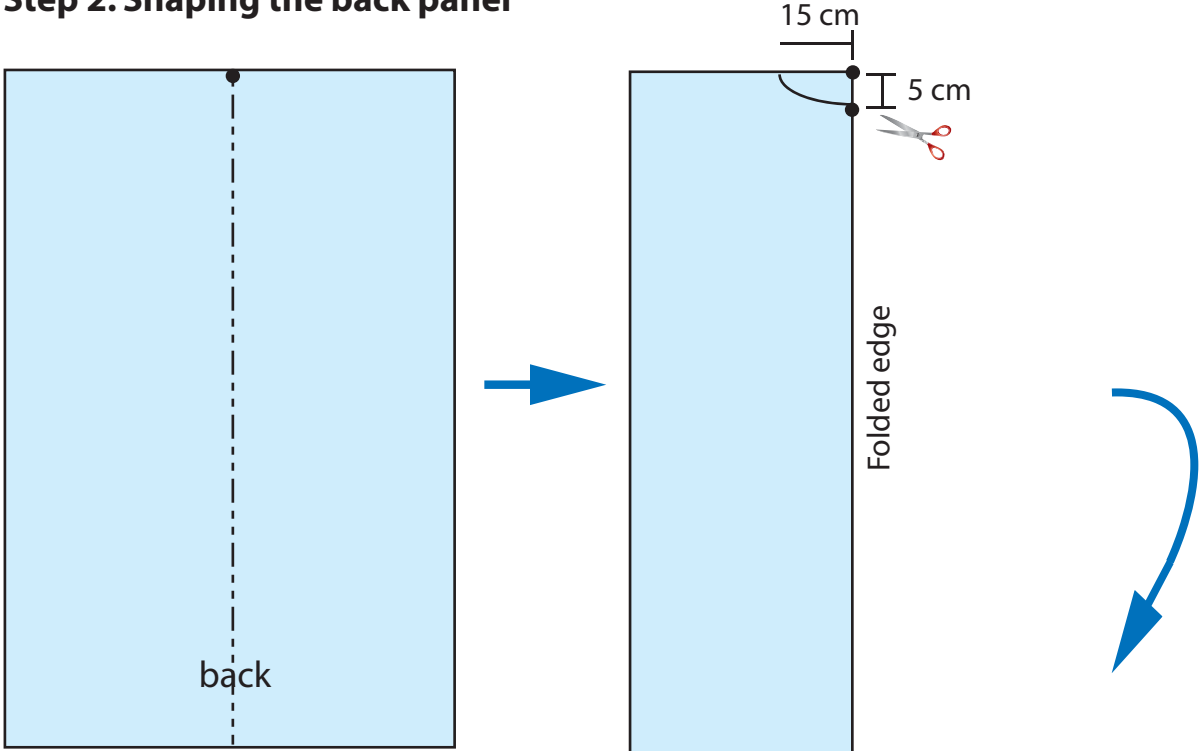
- a) Lay 2.5m of black fabric as a single layer on a flat, clean surface.
- b) Measure and cut the gown **front**, **back** and two **sleeves** as indicated on the diagram below.



You should now have four pattern pieces that look like this:

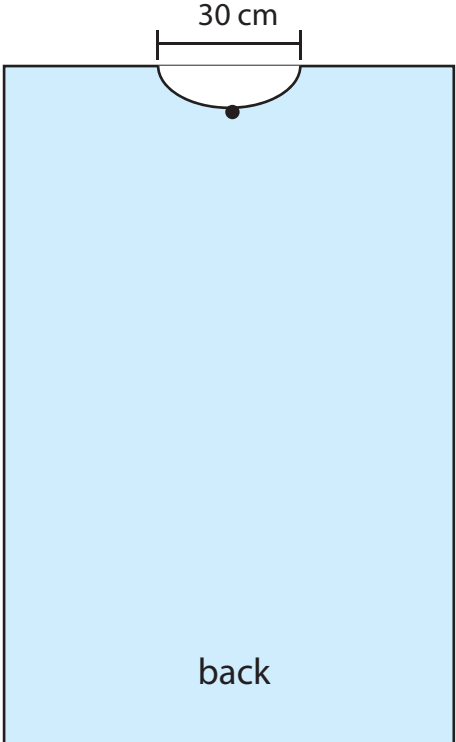


Step 2: Shaping the back panel



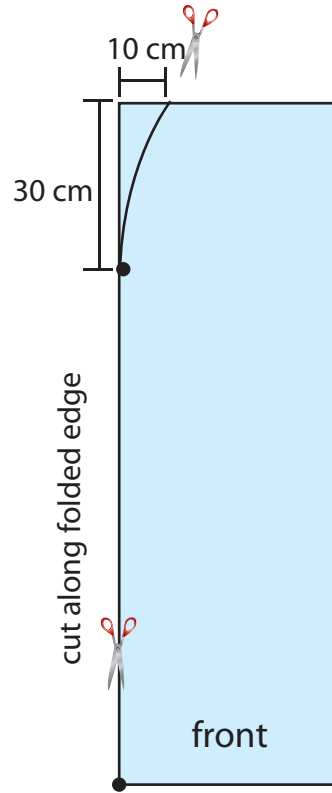
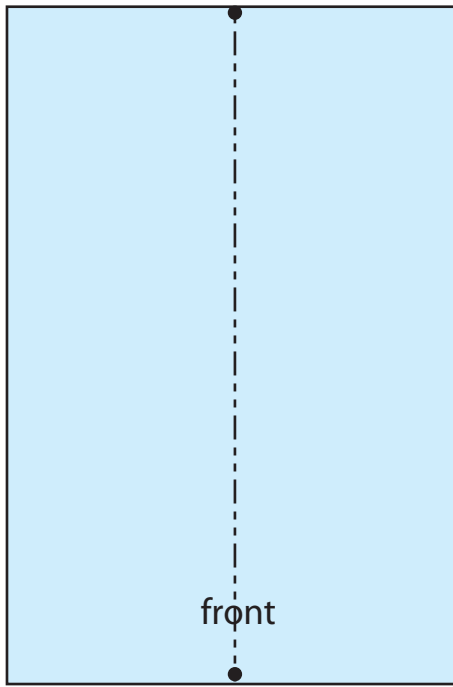
a) Fold **back** piece in half longways to find centre **back**. Make sure edges are matched.

b) Use sewing chalk or pins, to mark back **neck** shape. Cut neck shape out along **folded** edge.



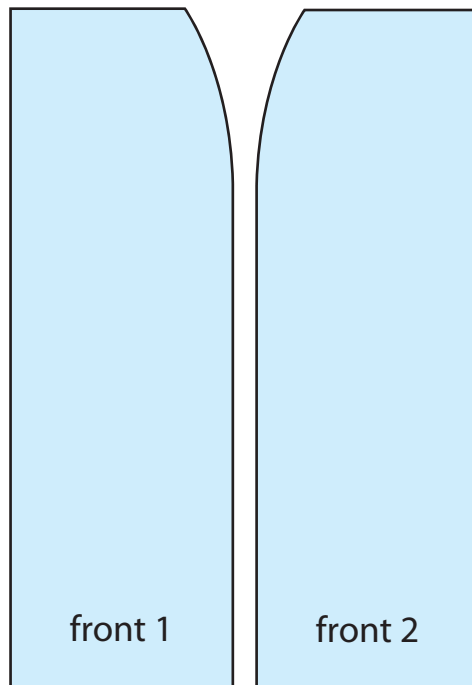
Your **back** piece should look like this.

Step 3: Shaping the two front panels



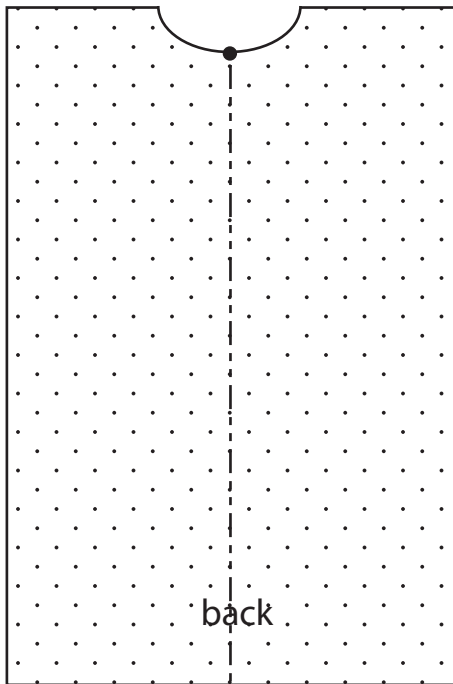
a) Fold **front** piece in half longways to find **centre front**. Make sure edges line up.

b) Use sewing chalk or pins to mark front **neck** shape. Cut neck shape out along **folded** edge.

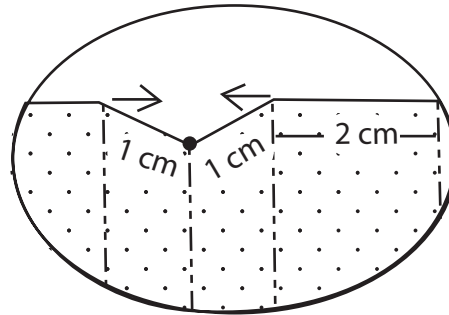


You should now have two separate **front** panels.

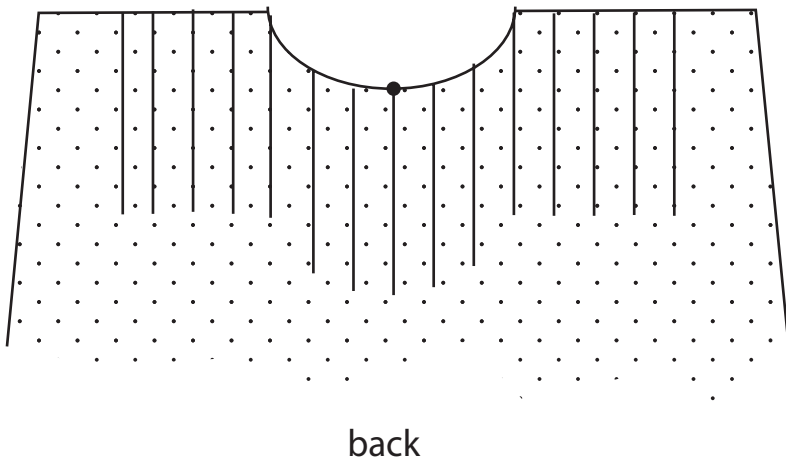
Step 4: Pleating the back panels



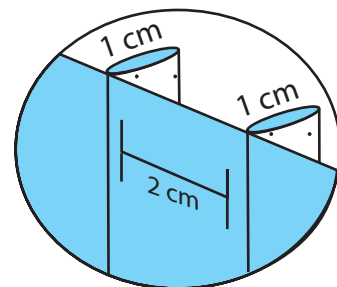
a) Find the centre **back** and mark with chalk or pin.



b) Draw together and pin a 1 cm pleat with the fold of the pleat at centre **back**.

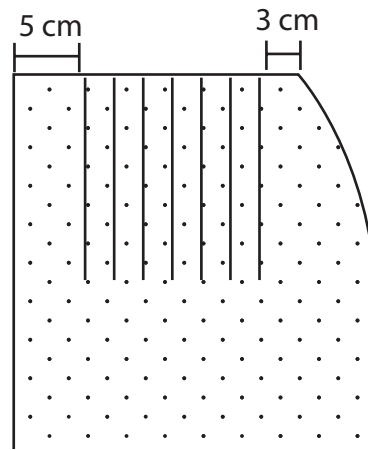
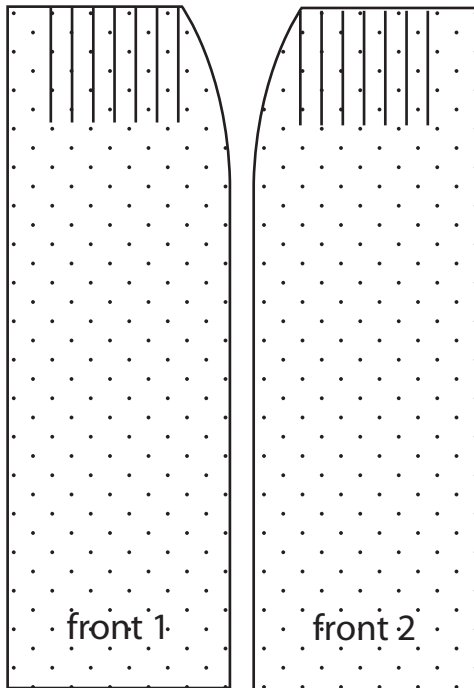


c) Pin another 7 pleats on either side of the central pleat to create a total of 15 evenly spaced shallow pleats across the **back**. There will be about a 2 cm gap between each pleat.



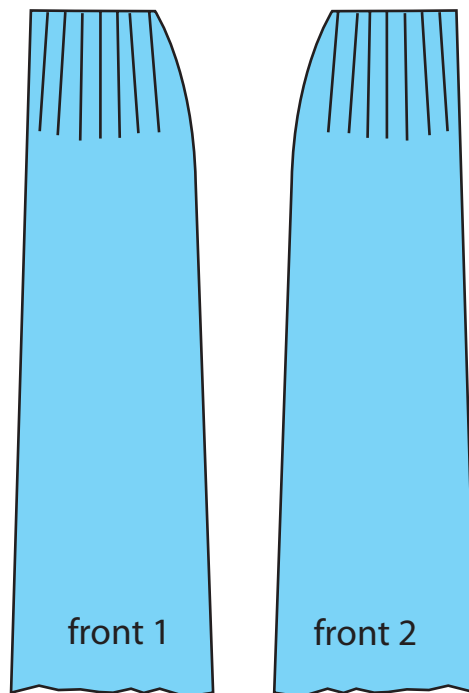
Once sewn, your **pleats** should look like this

Step 5: Pleating the front panels



Close-up of front panels with pleats marked (measurements are approximate)

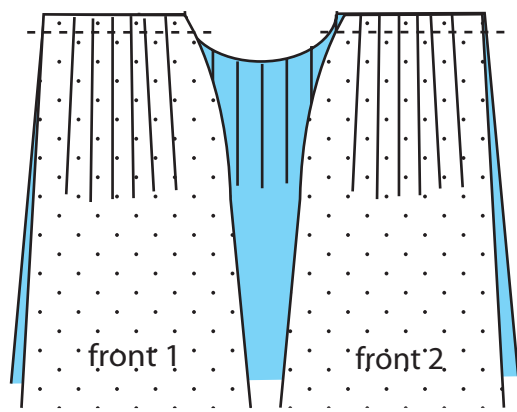
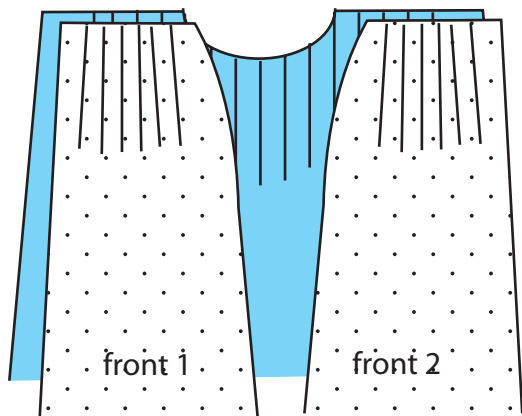
- As in **Step 4**, pin seven 1 cm evenly spaced pleats on each of the two **front** panels. There will be about a 2 cm gap between each pleat. Make sure that some fabric remains unpleated at either end of the upper edge of both front panels for joining to sleeves.
- Before sewing the pleats check that the **front** panels match the **back** panel at shoulders (see **Step 6**).
- Sew pleats.



Your **front** panels should now look like this.

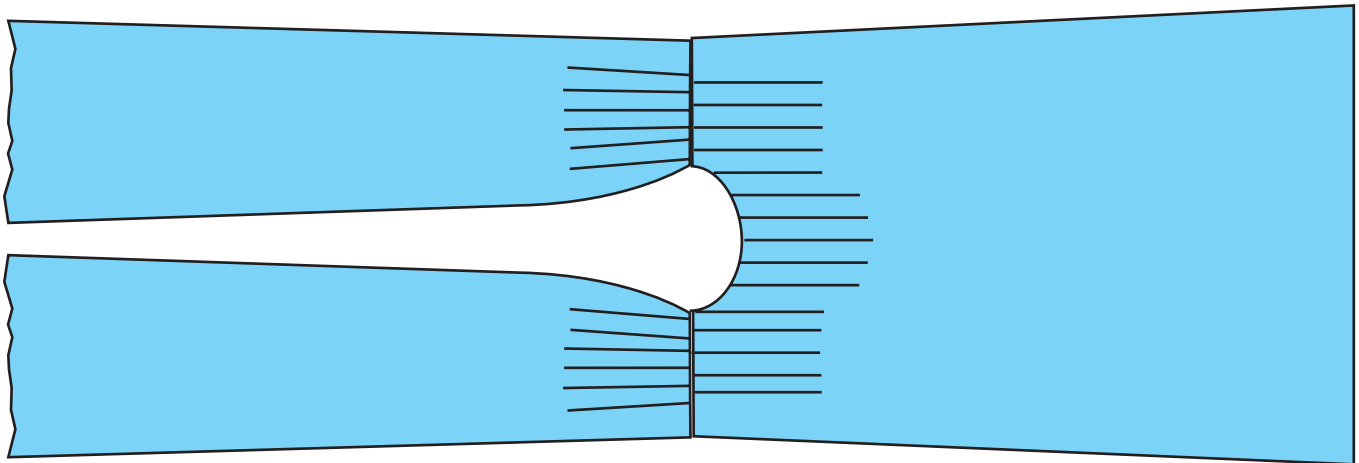


Step 6: Sewing the front and back panels together



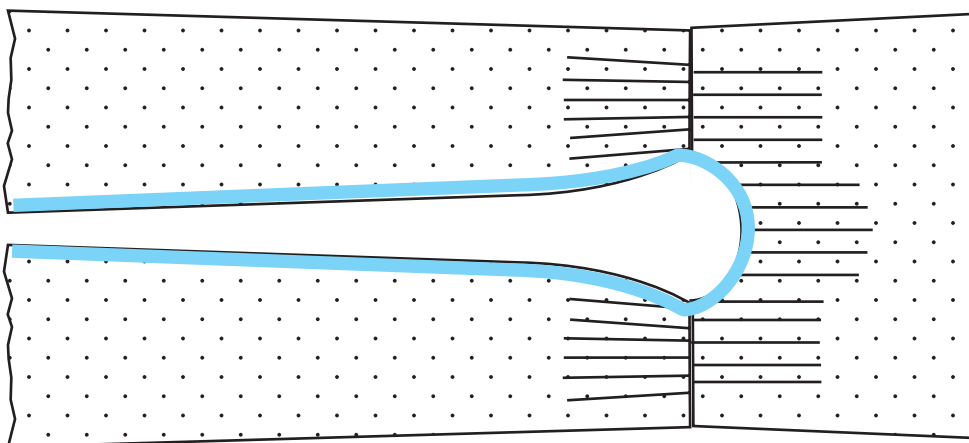
a) Pin **front** and **back** panels' right sides together at the shoulders.

b) Sew **back** and two **front** panels together at the shoulders.



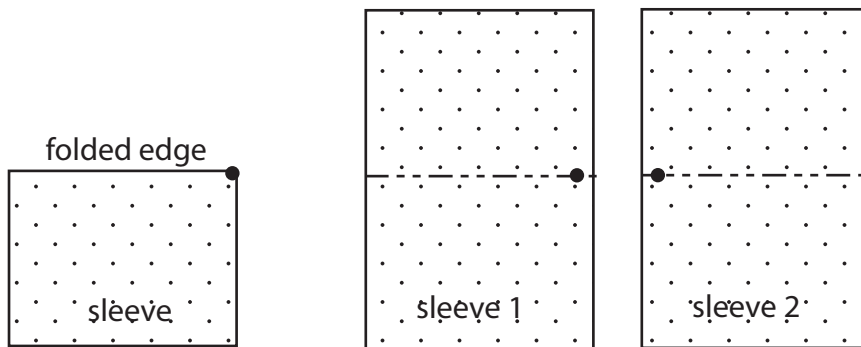
Your **back** and **front** should look like this when laid flat.

Step 7: Hemming the front and neck



Pin and sew a shallow hem on both **front** panels, and the **neck**.

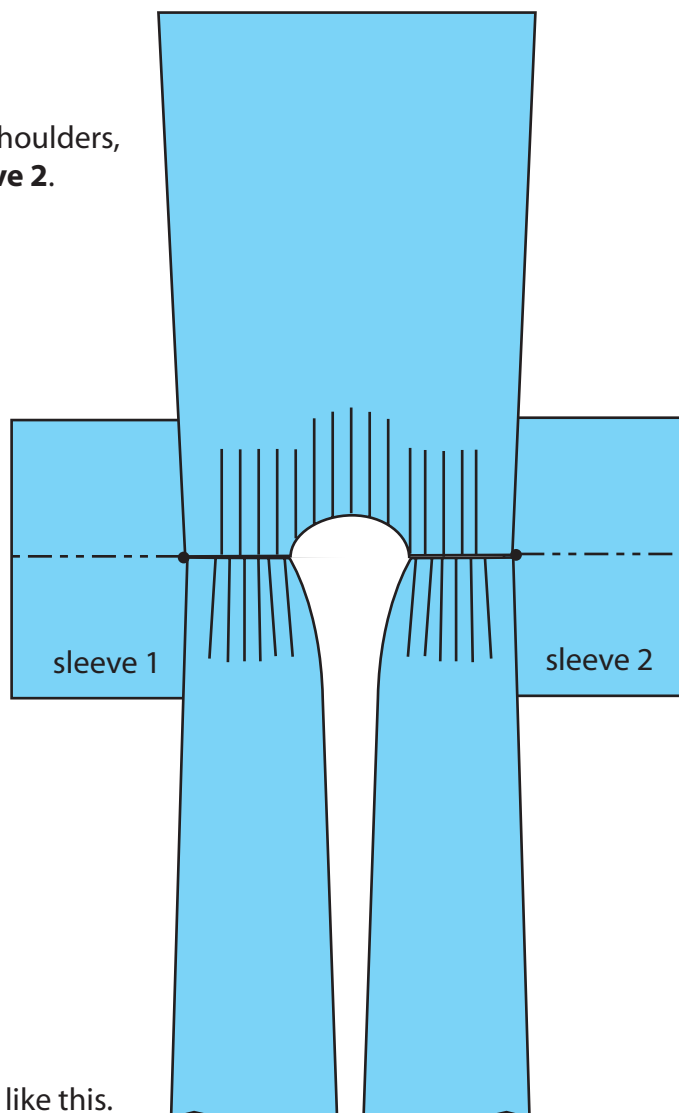
Step 8: Attaching the sleeves



a) Fold **sleeve 1** edges together and mark the centre point. Repeat for **sleeve 2**.

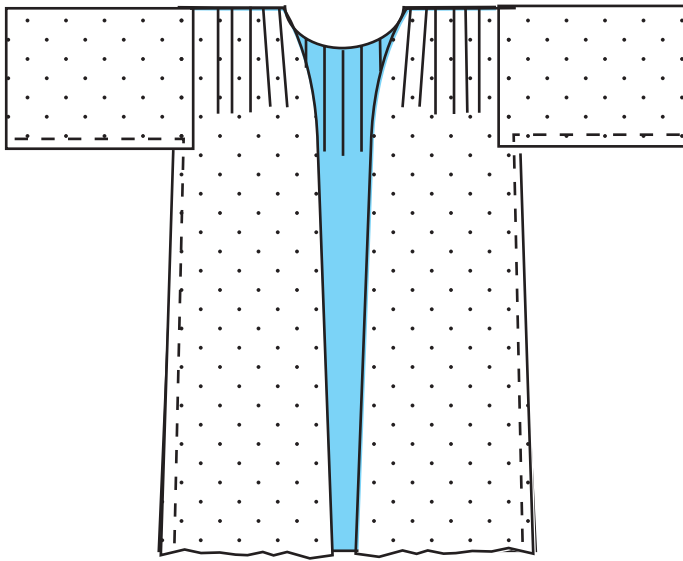
b) Pin **sleeve 1** to front and back at shoulders, right sides together. Repeat for **sleeve 2**.

c) Sew seam to attach each sleeve.



Your gown should look like this.

Step 9: Sewing the gown together



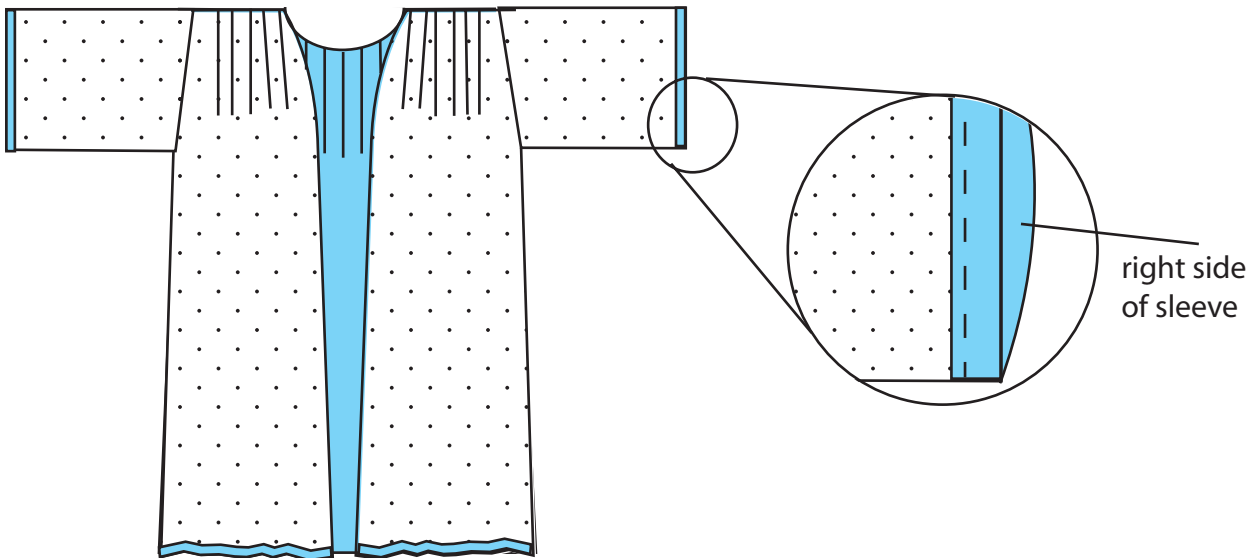
a) Pin bottom edge of sleeves, right sides of fabric together, to create two sleeve seams.

b) Pin **back** and **front** right sides of fabric together to create two side seams.

c) Sew the **sleeves** and **sides** together.

Your gown should look like this.

Step 10: Finishing the gown



a) Pin a shallow hem along the entire bottom edge of the **gown**. Sew hem on the wrong side of fabric.

b) Pin a shallow hem on the bottom edge of each **sleeve**. Sew hem on the wrong side of the fabric.

c) Turn the gown right side out and dress your Speaker or Clerk for a parliamentary role-play experience!