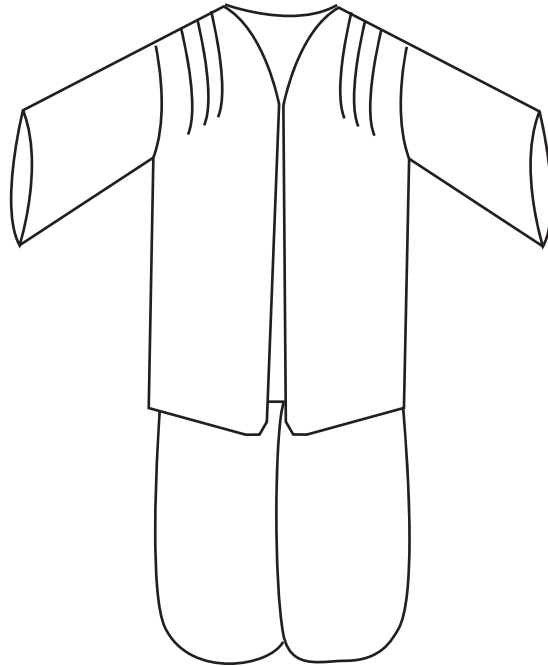


Role-play Toolkit

Make it Yourself: Serjeant-at-Arms gown


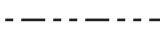
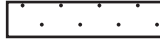


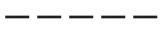


Simplified Serjeant-at-Arms gown

You will need:

- 2 m of black fabric
- black cotton
- sewing needle
- sewing machine
- scissors
- tape measure
- sewing chalk and/or sewing pins
- a flat, clean surface to work on

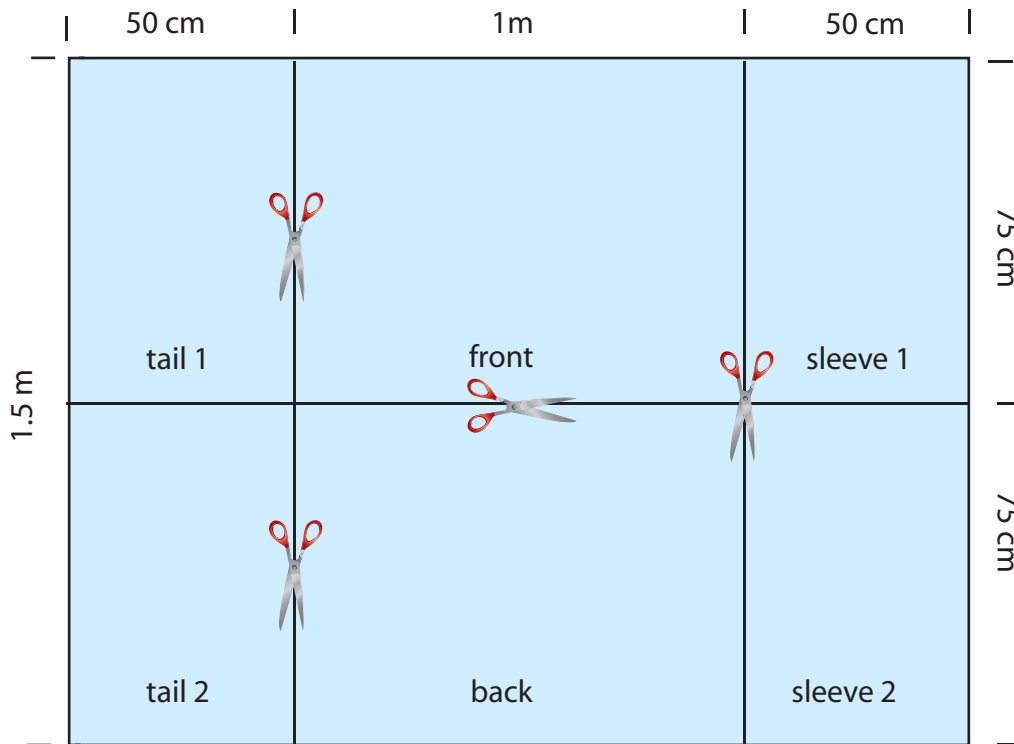
Key:

-  cut here
-  fold here
-  wrong side of fabric
-  right side of fabric
-  centre point
-  stitching

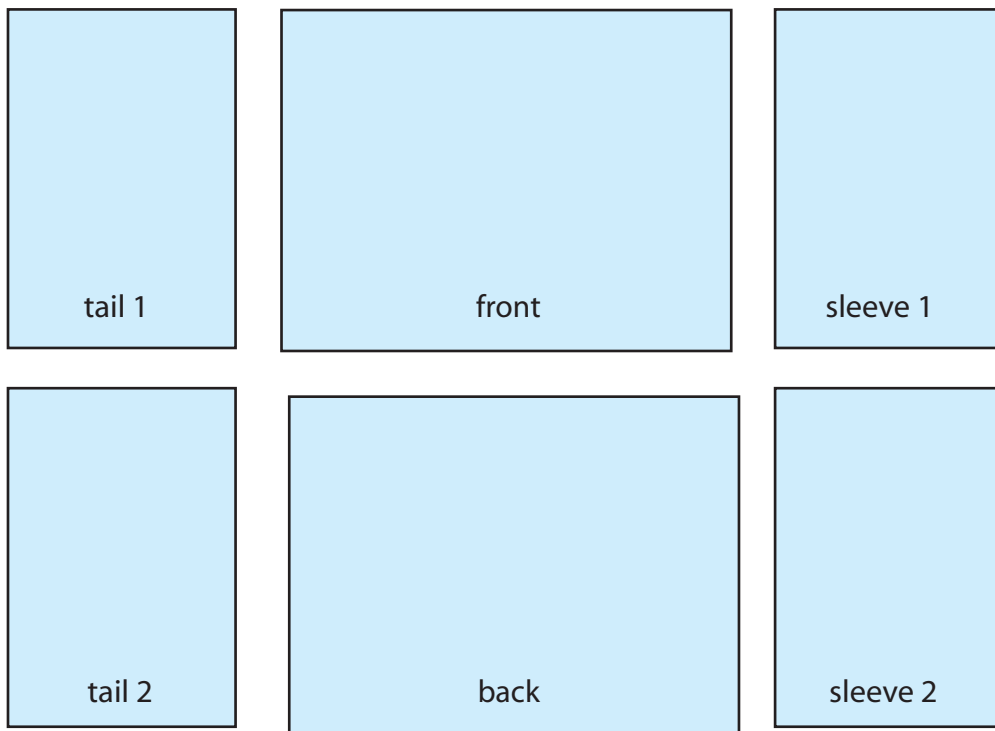


Step 1: Cutting out the fabric pieces

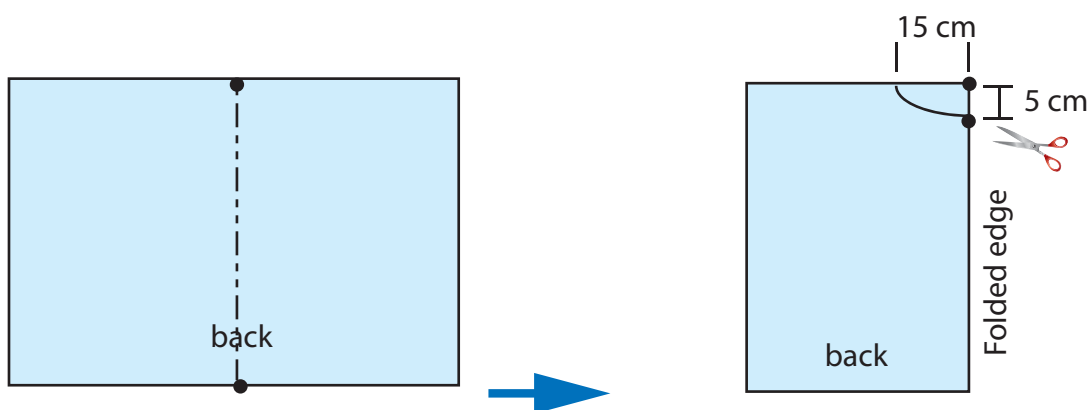
- a) Lay 2 m of black fabric as a single layer on a flat, clean surface.
- b) Measure and cut the gown **front**, **back**, two **sleeves** and two **tails** as indicated on the diagram below.



You should now have six pattern pieces that look like this:

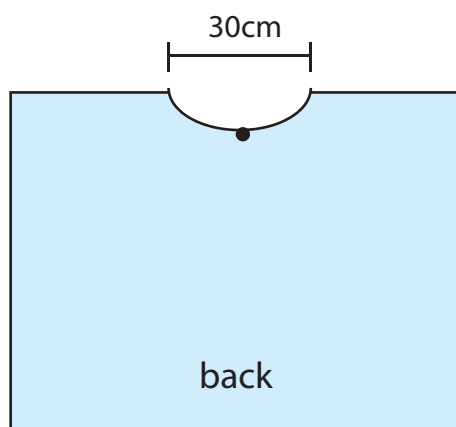


Step 2: Shaping the back panel



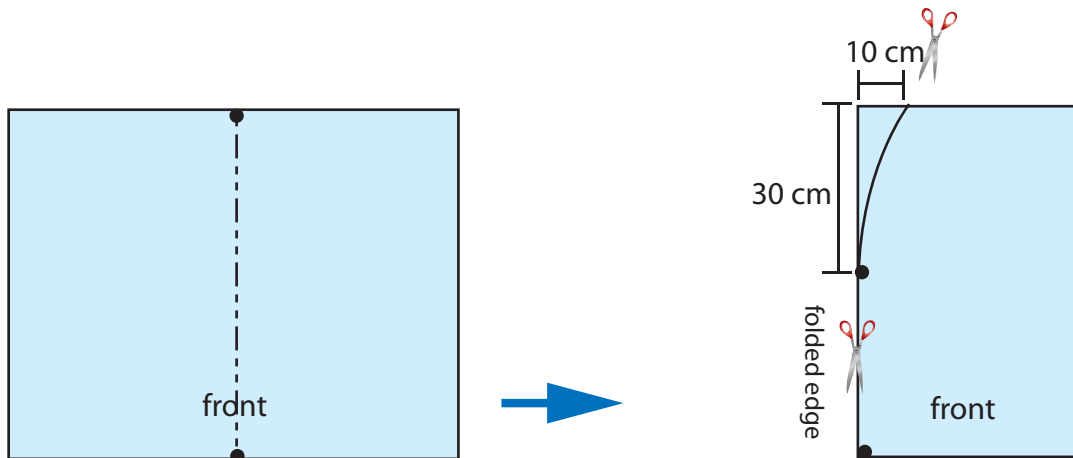
a) Fold **back** piece in half to find centre **back**. Make sure edges match.

b) Use sewing chalk or pins to mark back **neck** shape. Cut neck shape out along **folded** edge.



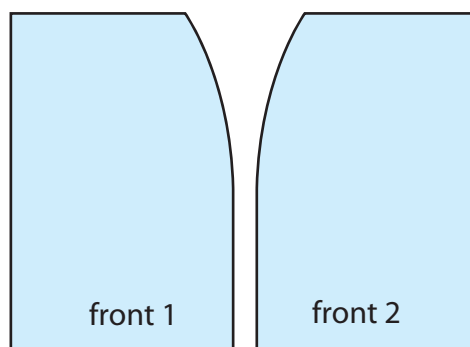
Your **back** piece should look like this.

Step 3: Shaping the two front panels



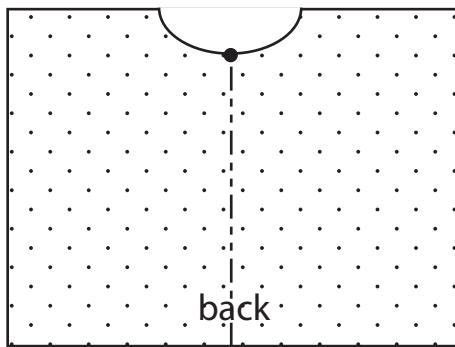
a) Fold **front** piece in half to find centre **front**. Make sure edges match.

b) Use sewing chalk or pins to mark front **neck** shape. Cut neck shape out along **folded** edge.

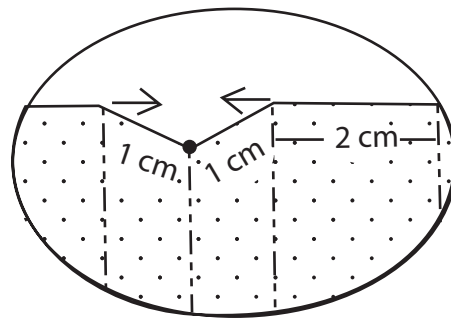


You should now have two separate **front** panels.

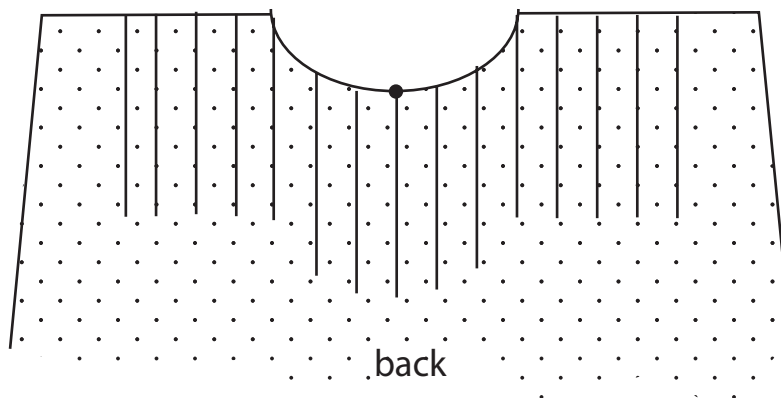
Step 4: Pleating the back panels



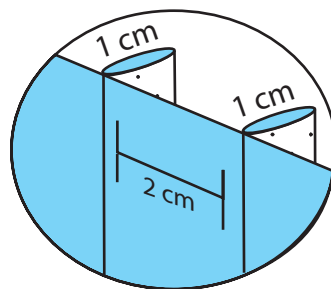
a) Find the centre **back** and mark with chalk or pin.



b) Draw together and pin a 1 cm pleat with the fold of the pleat at centre **back**.



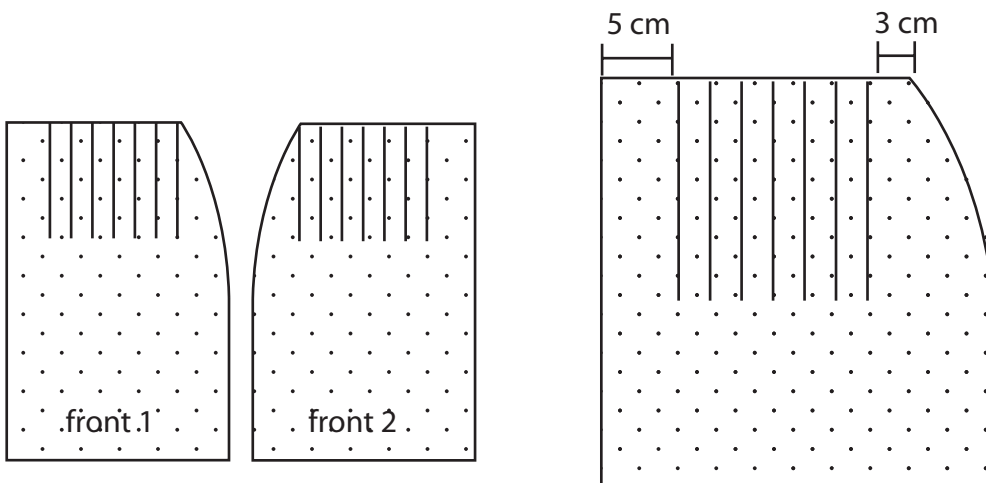
c) Pin another 7 pleats on either side of the central pleat to create a total of 15 evenly spaced shallow pleats across the **back**. There will be about a 2 cm gap between each pleat.



Once sewn, your **pleats** should look like this.

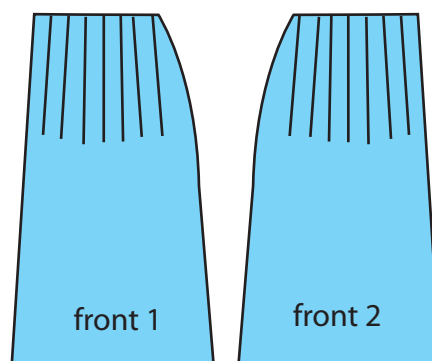


Step 5: Pleating the front panels



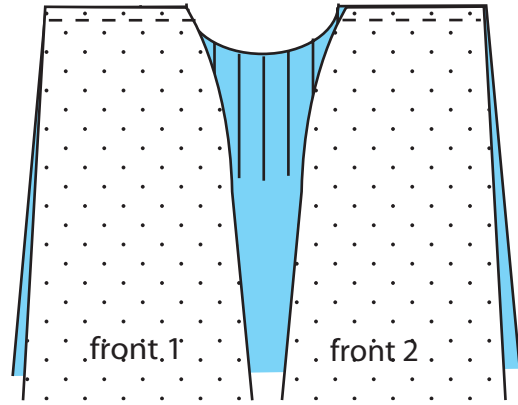
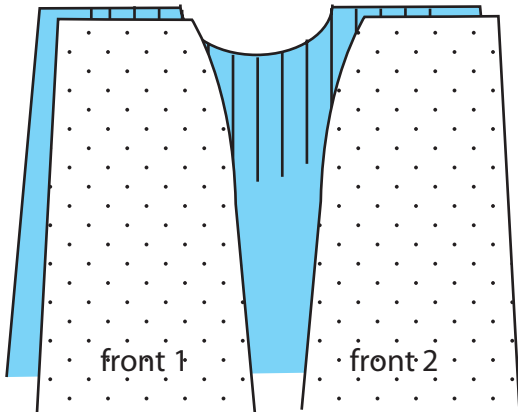
Close up of front panels with pleats marked (measurements are approximate)

- As in **Step 4**, pin seven 1 cm evenly spaced pleats on each of the two **front** panels. There will be about a 2 cm gap between each pleat. Make sure that some fabric remains unpleated at either end of the upper edge of both **front** panels for joining to **sleeves**.
- Before sewing the pleats check that the **front** and **back** fit neatly together at shoulders (see **Step 6**).
- Sew pleats.



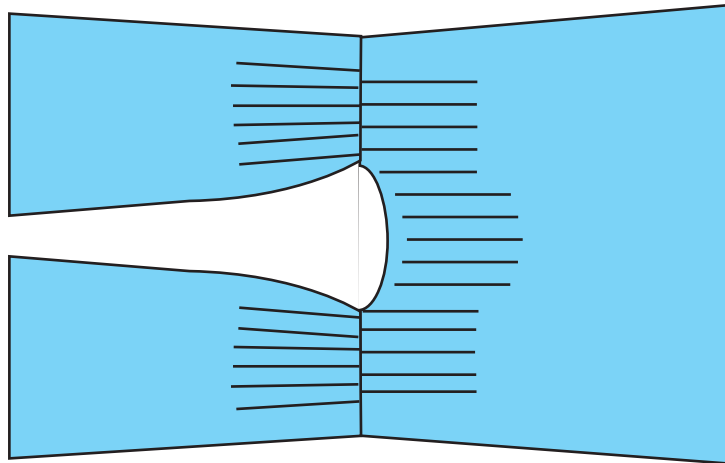
Your **front** panels should now look like this.

Step 6: Sewing the front and back panels together



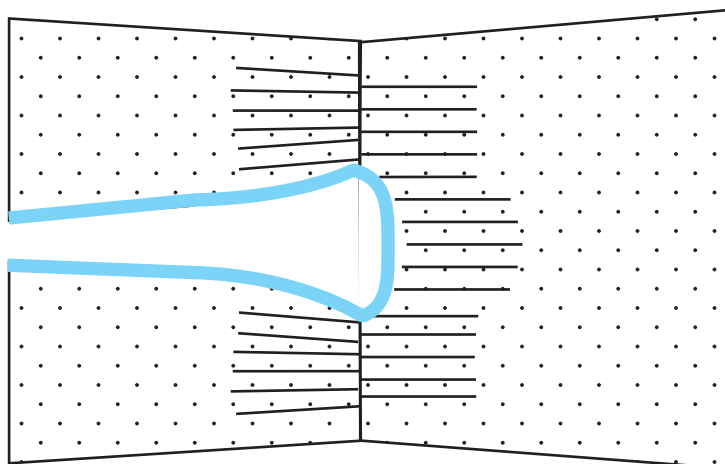
a) Pin **front** and **back** panels right sides together at the shoulders.

b) Sew **back** and two **front** panels together at the shoulders.



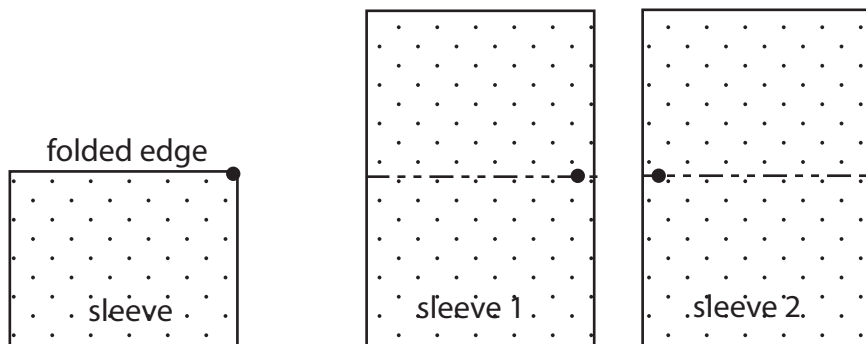
c) Your **front** and **back** should look like this when laid flat.

Step 7: Hemming the front and neck



a) Pin a shallow hem on both **front** panels, and around the **neck**.

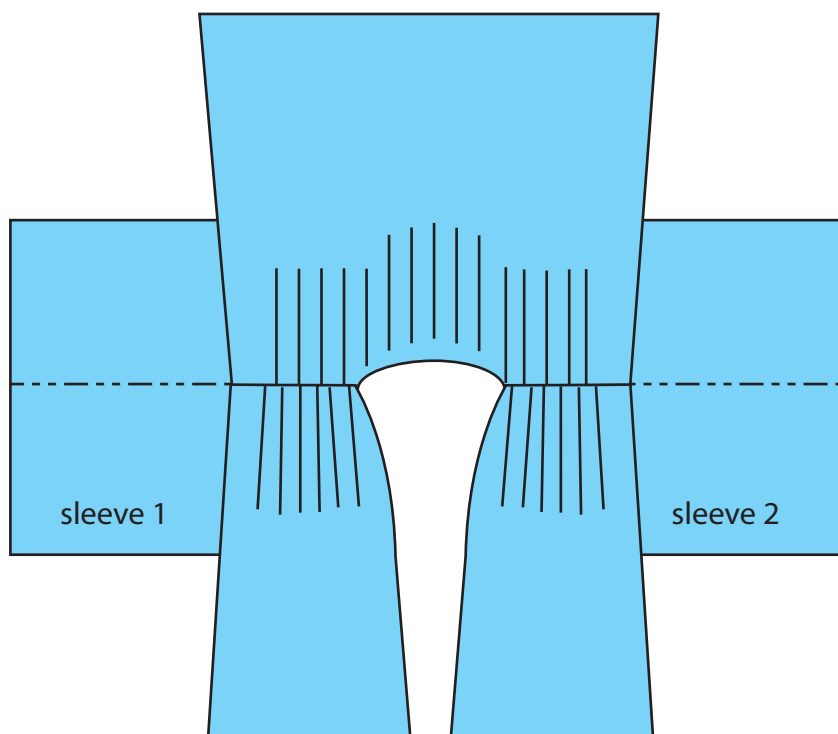
Step 8: Attaching the sleeves



a) Fold **sleeve 1** edges together and mark the centre point. Repeat for **sleeve 2**.

b) Pin **sleeve 1** to front and back at shoulders, right sides together. Repeat for **sleeve 2**.

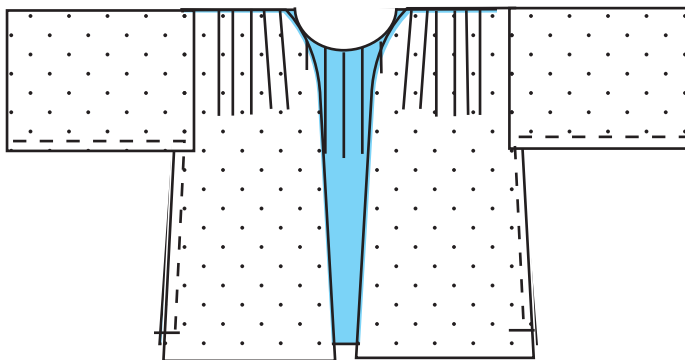
c) Sew seam to attach each sleeve.



Your jacket should look like this.



Step 9: Sewing the jacket together



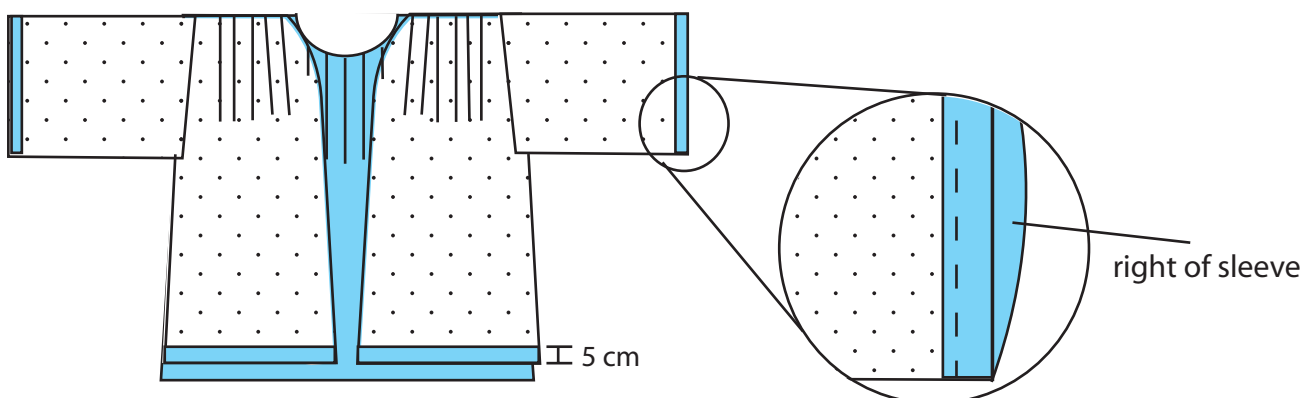
a) Pin bottom edge of **sleeves**, right sides of fabric together, to create two sleeve seams.

b) Pin **back** and **front** right sides of fabric together to create two side seams, stopping just short of bottom edge.

c) Sew the **sleeves** and **sides** together.

Your jacket should look like this.

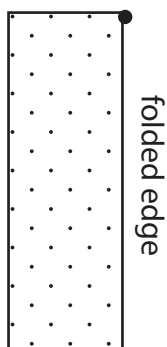
Step 10: Hemming the jacket



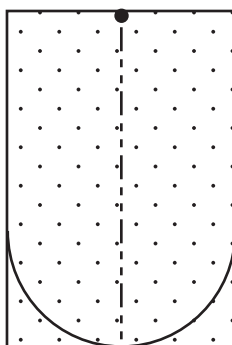
a) Pin a hem along both **front** panels only. Adjust hem to required length and sew on the wrong side of fabric.

b) Pin a shallow hem on the bottom edge of each **sleeve**. Sew hem on the wrong side of the fabric.

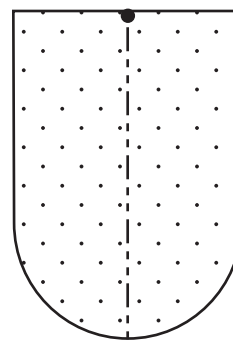
Step 11: Shaping and hemming the coat tails



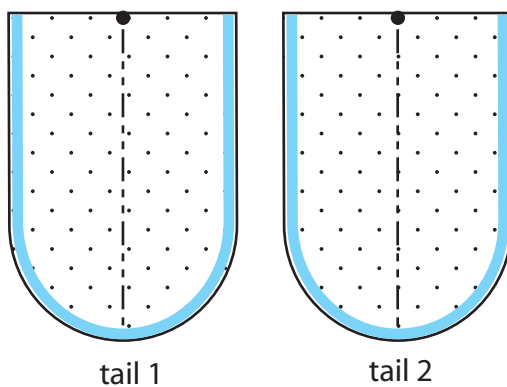
a) Fold **tail** pieces in half longways to find and mark the centre point. Make sure edges are matched.



b) Use sewing chalk or pins to mark scallops at the bottom of each **tail**.

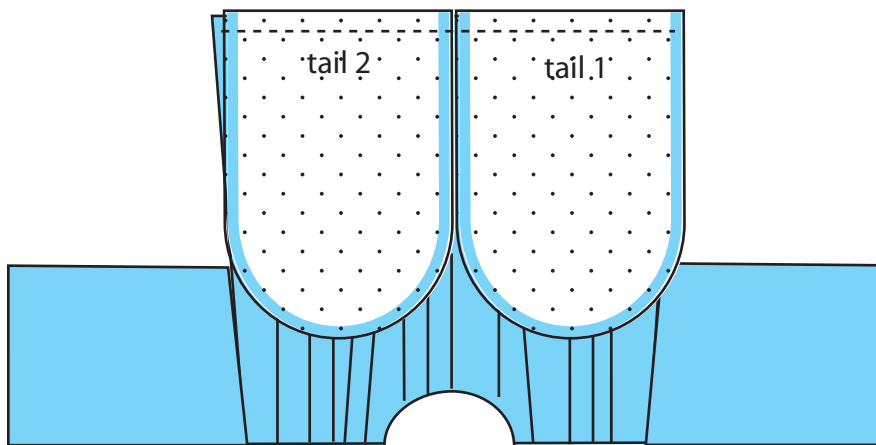


c) Cut **tails** to shape.



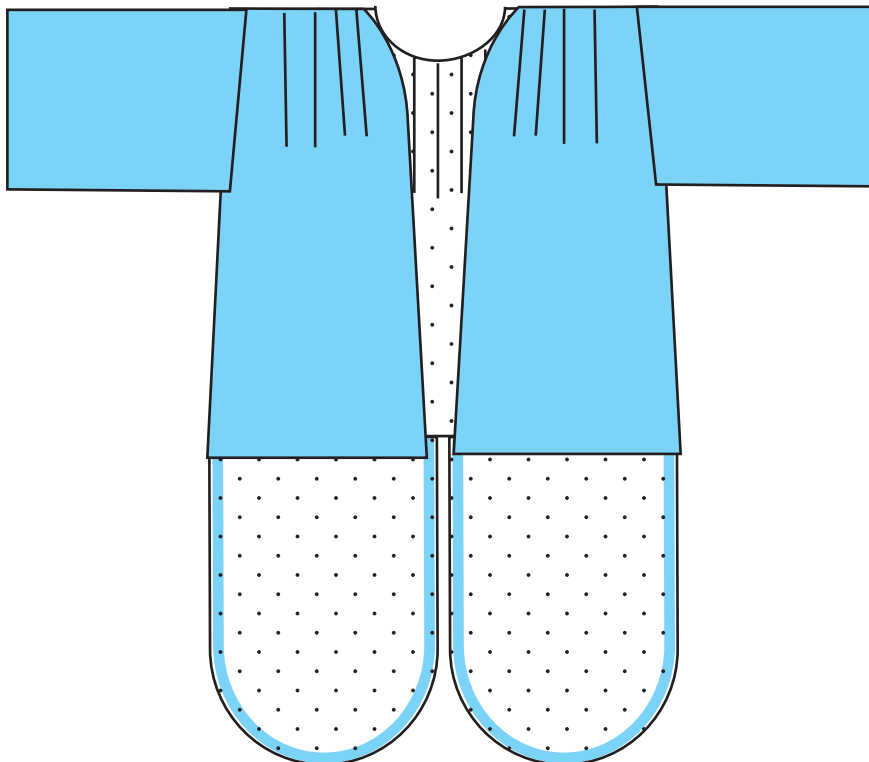
d) Pin a shallow hem on both **tails**. Sew the hem on the wrong side of fabric.

Step 12: Attaching tails to the back of the jacket



a) Pin **tail 1** and **tail 2** to the bottom of edge of the jacket **back** with right sides together. Sew seam to attach each **tail** to the **back** of the jacket.

b) Turn gown right side out and dress your Serjeant-at-Arms for a parliamentary role-play experience!



Your jacket should now look like this.

